



Latin American
Adult Vaccination
Advocacy Summit

9-10 April 2016

Burden of disease in older people and implications for health policy and practice

23%

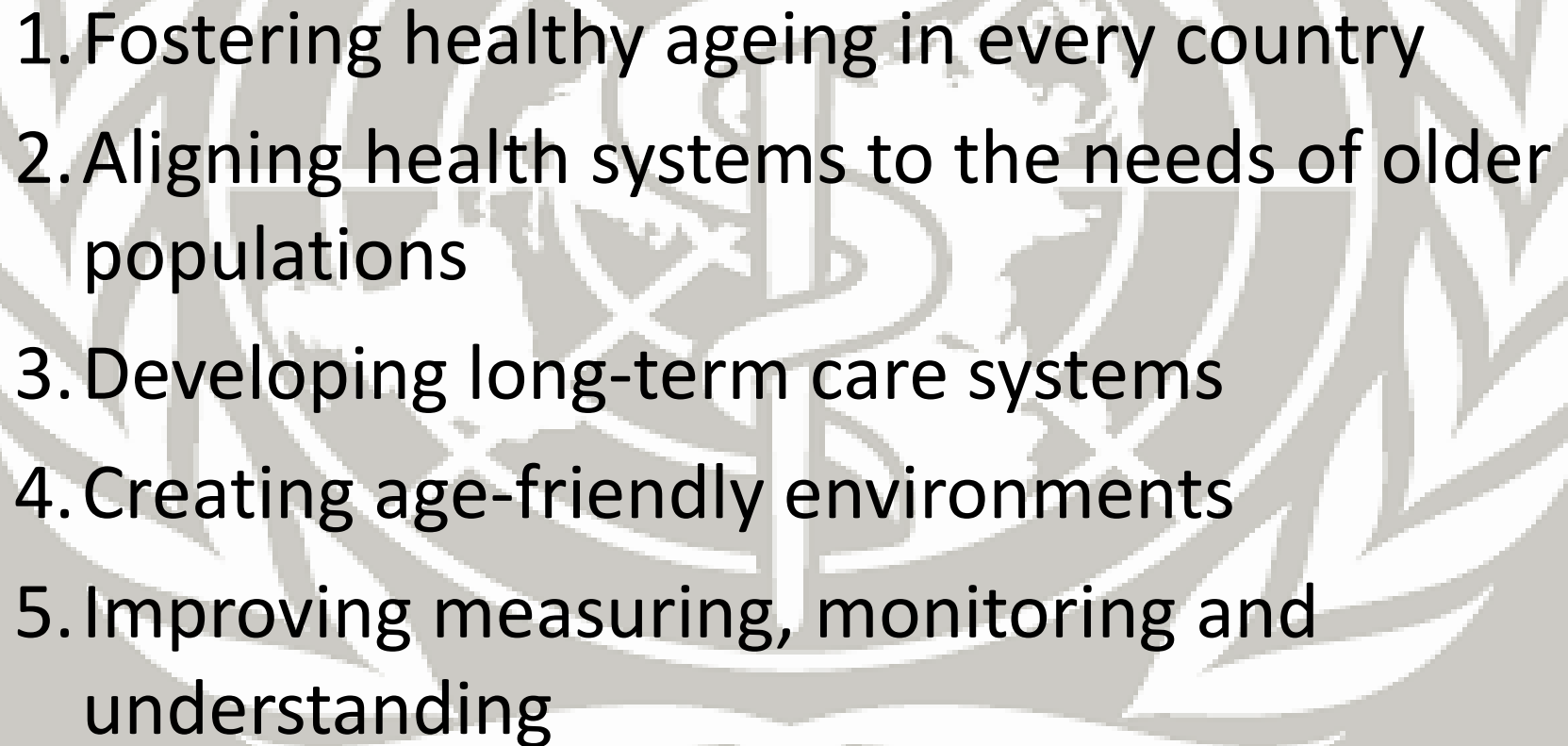
- Ageism
- Poor preparedness of health systems
 - Misplaced global health priorities
- Complexity of integrating care for complex multi morbidities



WORLD
REPORT
ON
**AGEING
AND
HEALTH**

World Health Organization, Ageing and Health

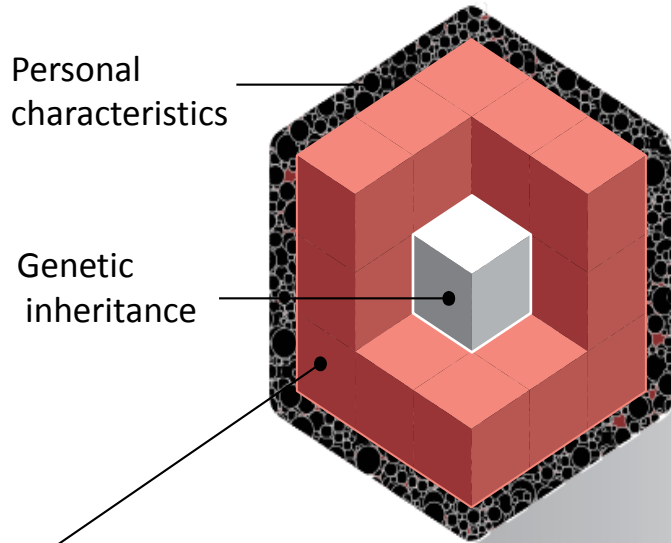
Strategic Objectives 2016-2020

- 
- The background of the slide features a large, light gray watermark of the World Health Organization logo. The logo consists of a central Rod of Asclepius (a staff with a single snake) superimposed on a map of the world, all enclosed within a laurel wreath.
1. Fostering healthy ageing in every country
 2. Aligning health systems to the needs of older populations
 3. Developing long-term care systems
 4. Creating age-friendly environments
 5. Improving measuring, monitoring and understanding



Healthy Ageing

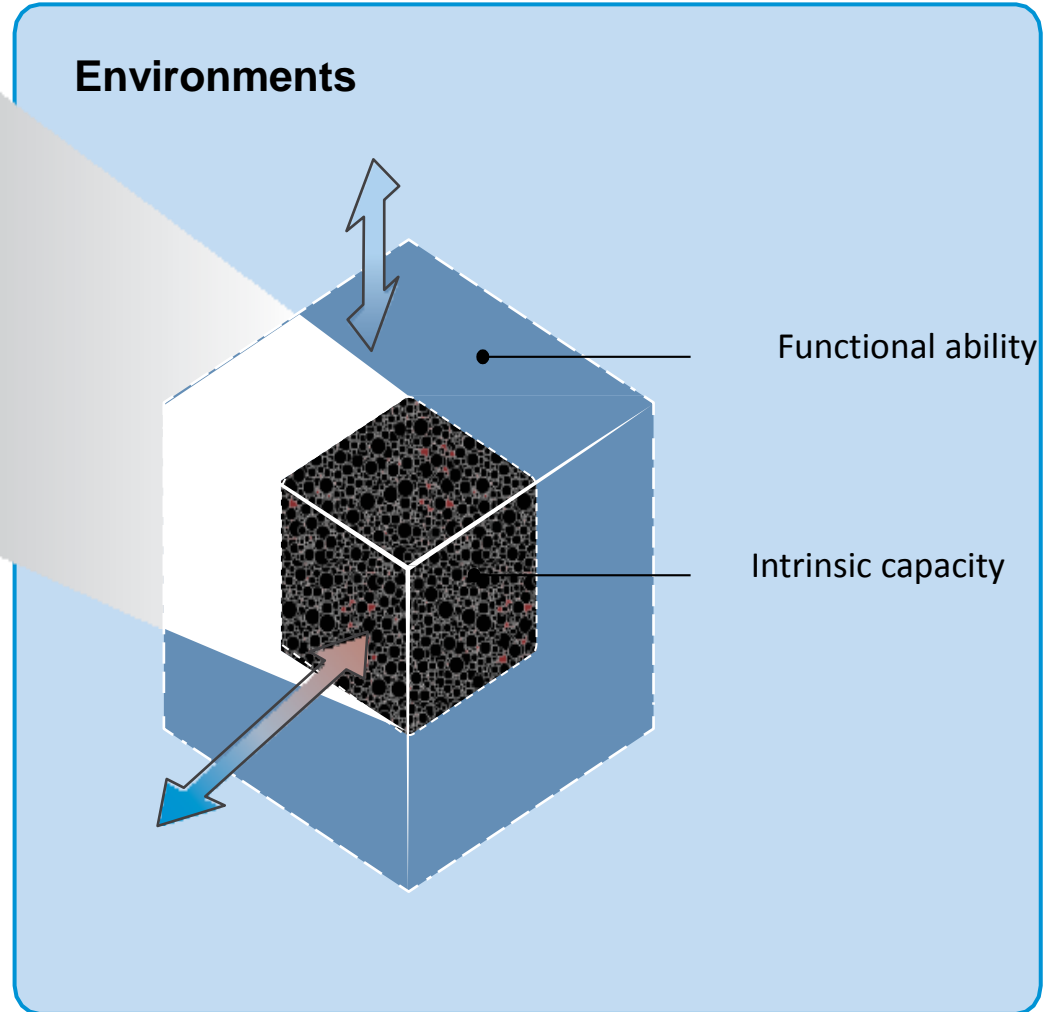
Intrinsic Capacity



Health characteristics

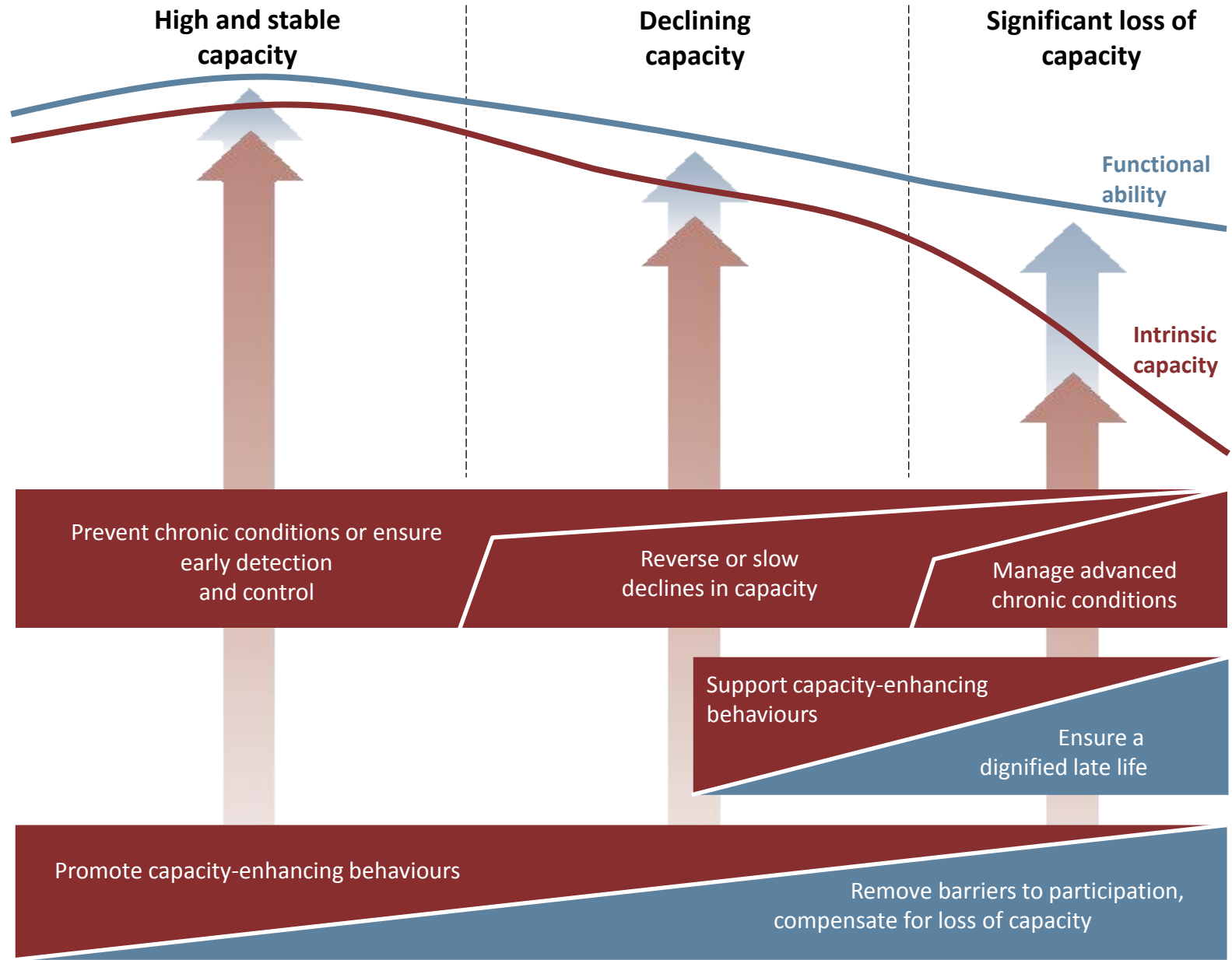
- Underlying age-related trends
- Health-related behaviors, traits, skills
- Physiological changes and risk factors
- Diseases and injuries
- Changes to homeostasis
- Broader geriatric syndromes

Environments



Public-health framework for **healthy ageing**

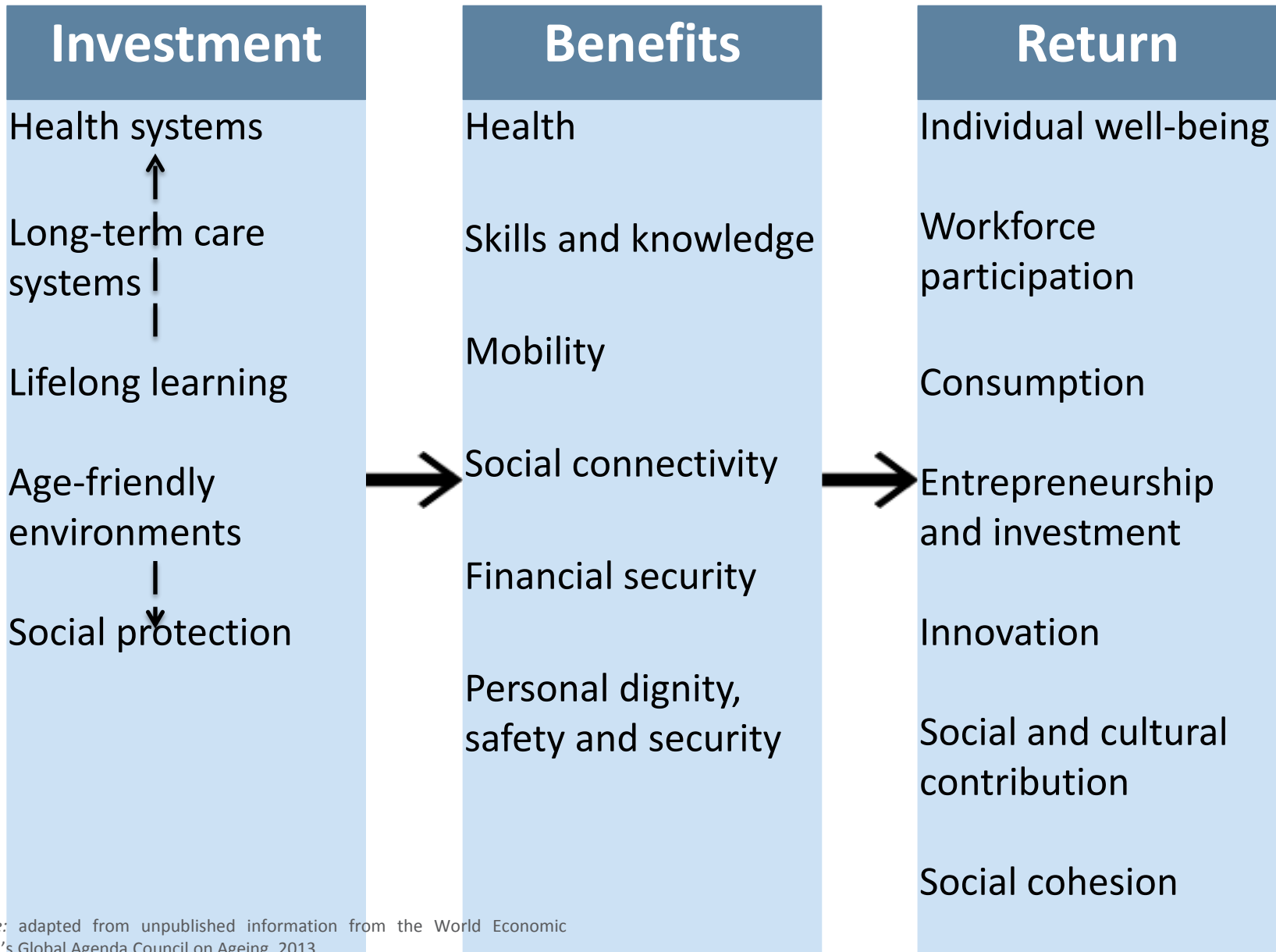
Opportunities for public-health action across the life course





“As a relatively healthy person who has never had respiratory problems, I never thought I was at risk from pneumonia.” *Catherine 66*

Return on investment



Functional Ability



High and stable capacity



Declining capacity



Significant loss of capacity

Prevent chronic conditions or ensure early detection and control

Reverse or slow declines in capacity

Manage advanced chronic conditions

Support capacity-enhancing behaviors

Ensure a dignified late life

Promote capacity-enhancing behaviours

Remove barriers to participation, compensate for loss of capacity

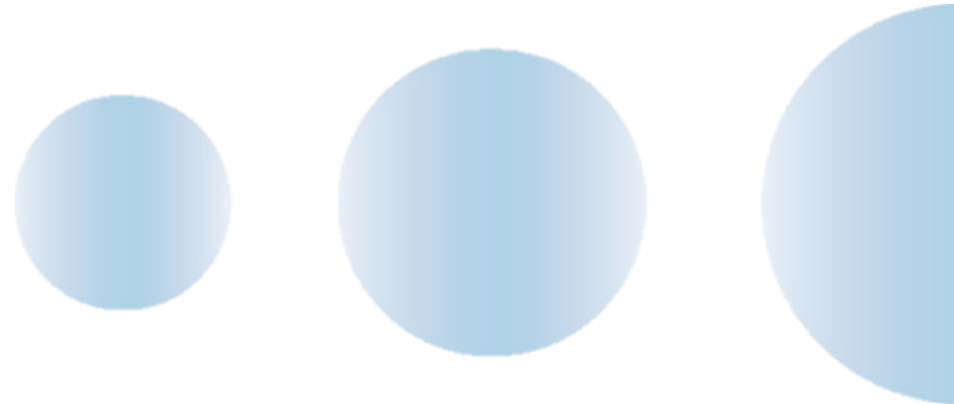


IFA



INTERNATIONAL FEDERATION ON AGEING
Global Connections

*Global point of connection of experts and expertise
to help shape and influence age-related policies*





Knowledge impacts
attitudes and decisions